

Retractors and Balancer

Program 0402



CONDUCTIX
wampfler

Contents

Retractors

Retractors without Blocking Device	4
Retractors with Blocking Device	7

Balancers

Balancer with Optimum Balance of Weight.	9
--	---

Accessories for Balancer

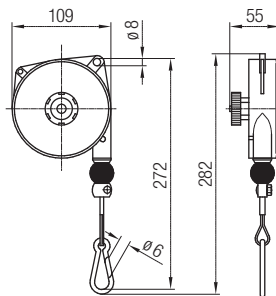
Spring safety hook	12
Safety Chain	12
Release Chain	12

Application Directives Information

Balancer	13
Warning	13
Information	13

Retractors without Blocking Device

Retractor (040871) Load Capacity 0.4 to 3 kg

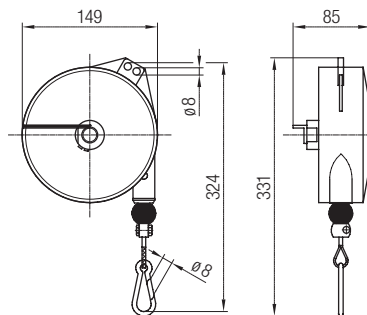


Technical details

- Case: die cast aluminum
- Rope: stainless steel wire, \varnothing 2 mm
- Frictionless rope guide
- Adjustable lifting stop
- Additional safety suspension
- Polyamides rope thimble

Order No.	Load Capacity [kg]	Cable Travel [m]	Weight [kg]
040871-01x1.6	0.4 - 1	1.6	0.6
040871-02x1.6	1 - 2		0.6
040871-03x1.6	2 - 3		0.8

Retractor (040871) Load Capacity 2 to 8 kg

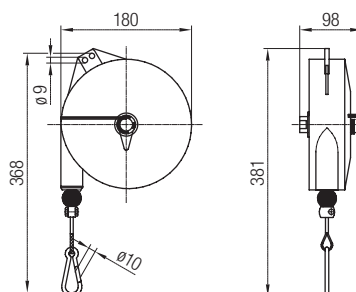


Technical details

- Case: die cast aluminum
- Rope: stainless steel wire, \varnothing 2 mm
- Frictionless rope guide
- Adjustable lifting stop
- Additional safety suspension
- Fail safe spring mechanism
- Polyamides rope thimble

Order No.	Load Capacity [kg]	Cable Travel [m]	Weight [kg]
040871-04x2.0	2 - 4	2.0	1.7
040871-06x2.0	4 - 6		1.9
040871-08x2.0	6 - 8		2.2

Retractor (040871) Load Capacity 2 to 14 kg



Technical details

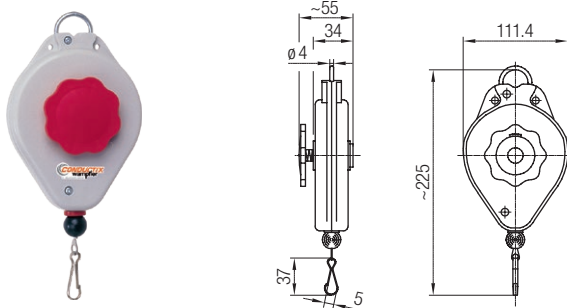
- Case: die cast aluminum
- Rope: stainless steel wire, \varnothing 2.5 mm
- Frictionless rope guide
- Adjustable lifting stop
- Additional safety suspension
- Fail safe spring mechanism
- Polyamides rope thimble

Order No.	Load Capacity [kg]	Cable Travel [m]	Weight [kg]
040871-04x2.5	2 - 4	2.5	3.0
040871-06x2.5	4 - 6		3.1
040871-08x2.5	6 - 8		3.2
040871-10x2.5	8 - 10		3.3
040871-12x2.5	10 - 14		3.5



Retractors without Blocking Device

Retractor (040804) Load Capacity 0.5 to 2 kg

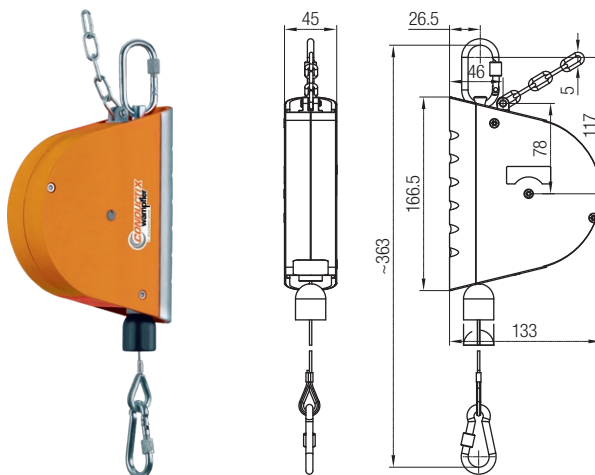


Technical details

- Case: wear resistant plastic
- Rope: \varnothing 2 mm, plastic
- Easy load setting
- Spring in riveted design

Order No.	Load Capacity [kg]	Cable Travel [m]	Weight [kg]
040804-1.2x2.0	0.5 - 1.2	2.0	0.5
040804-2.0x2.0	1.0 - 2.0		

Retractor (040814) Load Capacity 0.5 to 3 kg

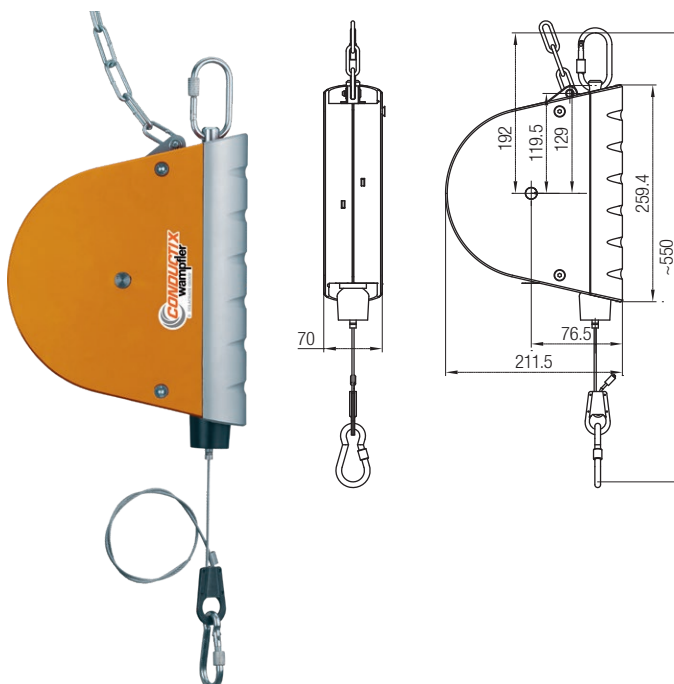


Technical details

- Case: impact- and abrasion resistant plastic
- Cable drum: abrasion resistant plastic
- Cable: high-strength galvanised steel cable, \varnothing 2 mm, with elastic cable stop buffer and spring hook for load suspension
- Suspension: rotating safety hook
- Spring: High-strength special suspension spring in riveted design, easy load setting

Order No.	Load Capacity [kg]	Cable Travel [m]	Weight [kg]
040814-02x2.5	0.5 - 2	2.5	0.8
040814-03x2.5	1.5 - 3		

Retractor (040824) Load Capacity 2 to 14 kg



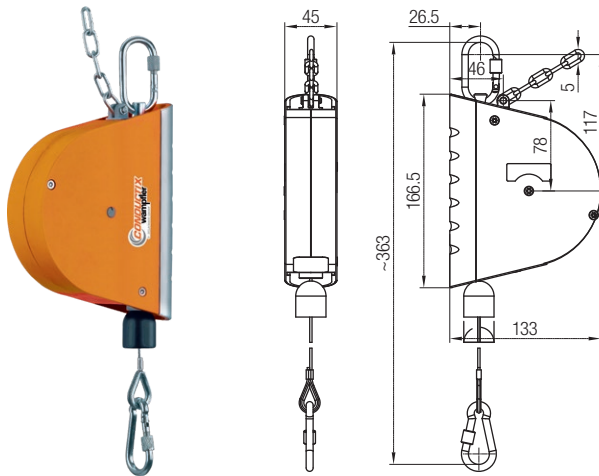
Technical details

- Case: impact- and abrasion resistant plastic
- Cable drum: abrasion resistant plastic
- Cable: high-strength galvanised steel cable, \varnothing 2 mm, with elastic cable stop buffer and screw-type spring hook for load suspension
- Suspension: rotating safety hook
- Spring: High-strength, banded special suspension spring load continuously adjustable

Order No.	Load Capacity [kg]	Cable Travel [m]	Weight [kg]
040824-05x3.0	2 - 5	3.0	3.3
040824-08x3.0	4 - 8		3.7
040824-10x3.0	7 - 10		3.7
040824-14x3.0	10 - 14		3.9

Retractors with Blocking Device

Retractor (040813) Load Capacity 0.5 to 3 kg

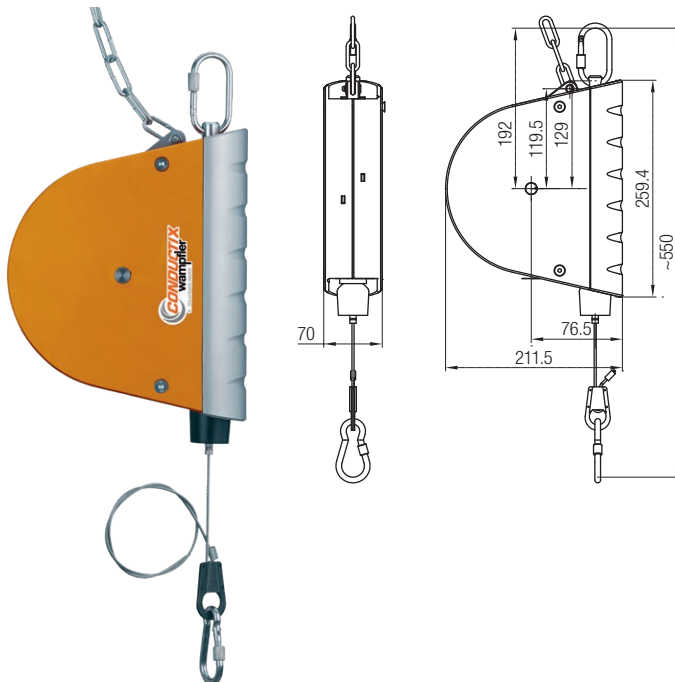


Technical details

- Case: impact- and abrasion resistant plastic
- Cable drum: abrasion resistant plastic
- Cable: high-strength galvanised steel cable, \varnothing 2 mm, with elastic cable stop buffer and spring hook for load suspension
- Suspension: rotating safety hook
- Spring: High-strength special suspension spring in riveted design, easy load setting

Order No.	Load Capacity [kg]	Cable Travel [m]	Weight [kg]
040813-02x2.5	0.5 - 2	2.5	0.9
040813-03x2.5	1.5 - 3		

Retractor (040823) Load Capacity 2 to 14 kg



Technical details

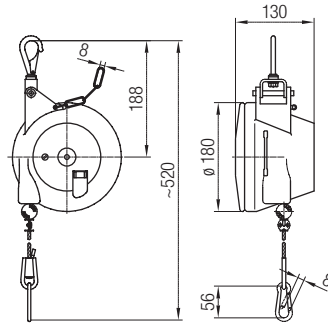
- Case: impact- and abrasion resistant plastic
- Cable drum: abrasion resistant plastic
- Cable: high-strength galvanised steel cable, \varnothing 2 mm, with elastic cable stop buffer and screw-type spring hook for load suspension
- Suspension: rotating safety hook
- Spring: High-strength, banded special suspension, spring load continuously adjustable

Order No.	Load Capacity [kg]	Cable Travel [m]	Weight [kg]
040823-05x3.0	2 - 5	3.0	3.5
040823-08x3.0	4 - 8		3.8
040823-10x3.0	7 - 10		3.8
040823-14x3.0	10 - 14		4.0



Balancers with Optimum Balance of Weight

Balancer without Blocking Device (040831) Load Capacity 3 to 17 kg



Technical details

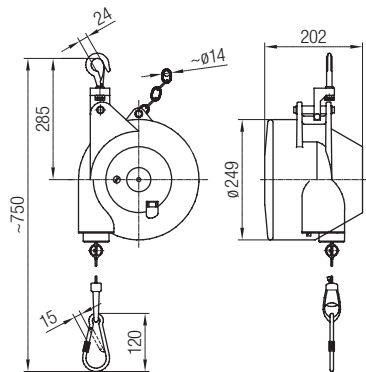
- Case: abrasion resistant and high-strength plastic
- Suspension: rotating and swiveling safety hook
- Riveted special bearing spring
- Steel rope: $\varnothing 5$ mm, galvanised, with elastic rope retracting limitation and screw snap hook to attach the load
- Load setting: stepless via positioning screw
- Rope turnbuckle for stepless rope length setting
- With safety chain and spring breakage safety device

Note

On balancers adjusted load is balanced in the adjusted working height!

Order No.	Load Capacity [kg]	Cable Travel [m]	Weight [kg]
040831-005x2.0	3.0 - 5.0	2.0	2.9
040831-007x2.0	4.5 - 7.0		3.1
040831-010x2.0	6.0 - 10.0		3.2
040831-014x2.0	9.0 - 14.0		3.4
040831-017x2.0	13.0 - 17.0		3.6

Balancer without Blocking Device (040831) Load Capacity 12 to 90 kg



Technical details

- Case: high-strength aluminum sand casting
- Suspension: rotating and swiveling high security hook
- Fully locked special bearing spring with spring breakage safety device
- Steel rope: $\varnothing 5$ mm, galvanised, with elastic rope retracting limitation and screw snap hook to attach the load
- Load setting: stepless via positioning screw
- With safety expansion chain

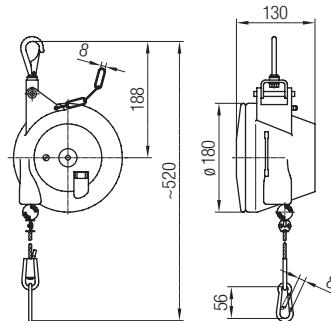
Note

On balancers adjusted load is balanced in the adjusted working height!

Order No.	Load Capacity [kg]	Cable Travel [m]	Weight [kg]
040831-020x2.0	12 - 20	2.0	14.8
040831-030x2.0	20 - 30		15.2
040831-045x2.0	30 - 45		16.9
040831-060x2.0	45 - 60		17.3
040831-075x2.0	60 - 75		18.7
040831-090x2.0	75 - 90		19.7

Balancers with Optimum Balance of Weight

Balancer with Blocking Device (040832) Load Capacity 4.5 to 17 kg



Technical details

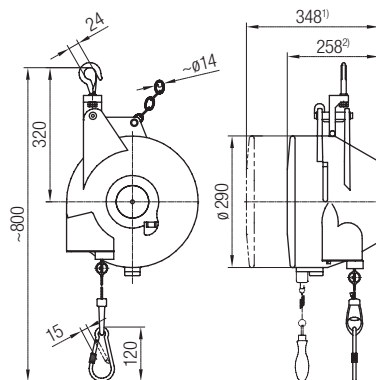
- Case: abrasion resistant and high-strength plastic
- Rope reel: wear resistant plastic
- Integrated locking device for blocking the rope reel
- Suspension: rotating and swiveling safety hook
- Riveted special bearing spring
- Steel rope: $\varnothing 5$ mm, galvanised, with elastic rope retracting limitation and screw snap hook to attach the load
- Load setting: stepless via positioning screw
- Rope turnbuckle for stepless rope length setting
- With safety chain and spring breakage safety device

Note

On balancers adjusted load is balanced in the adjusted working height!

Order No.	Load Capacity [kg]	Cable Travel [m]	Weight [kg]
040832-07x2.0	4.5 - 7.0	2.0	3.3
040832-10x2.0	6.0 - 10.0		3.4
040832-14x2.0	9.0 - 14.0		3.6
040832-17x2.0	13.0 - 17.0		3.8

Balancer without Blocking Device (040831) Load Capacity 15 to 150 kg



Technical details

- Case: high-strength aluminum sand casting
- Suspension: rotating and swiveling high security hook
- Fully locked special bearing spring with spring breakage safety device
- Steel rope: $\varnothing 5$ mm, galvanised, with elastic rope retracting limitation and screw snap hook to attach the load
- Load setting: stepless via positioning screw
- With safety expansion chain

Note

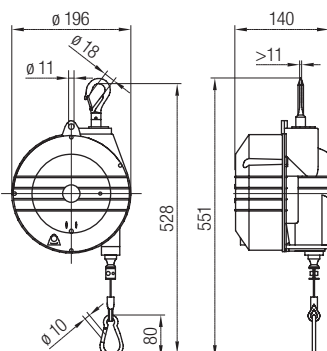
On balancers adjusted load is balanced in the adjusted working height!

- 1) at Weight >100 kg
2) at Weight <100 kg

Order No.	Load Capacity [kg]	Cable Travel [m]	Weight [kg]
040831-025x3.0	15 - 25	3.0	25
040831-035x3.0	25 - 35		26
040831-050x3.0	35 - 50		27
040831-065x3.0	50 - 65		28
040831-080x3.0	65 - 80		29
040831-090x3.0	80 - 90		30
040831-100x3.0	90 - 100		32
040831-115x3.0	100 - 115		42
040831-130x3.0	115 - 130		44
040831-140x3.0	130 - 140		46
040831-150x3.0	140 - 150		48

Balancers with Optimum Balance of Weight

Balancer without Blocking Device (040874) Load Capacity 10 to 25 kg



Technical details

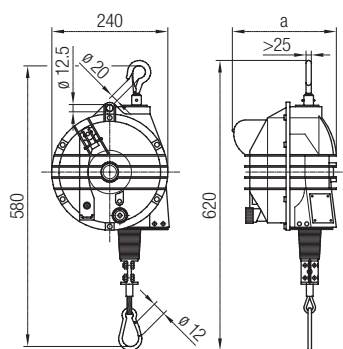
- Sturdy aluminum case
- Rope: stainless steel wire, \varnothing 2.5 mm
- Rope guide: low friction
- Conical reel body with ball bearing
- Fine adjustment in the lifting area with continuous load adjustment
- Suspension: Rotating safety hook
- Blocking device (to fix or release the load at the requested height)
- Auxiliary safety suspension
- Fail safe spring mechanism
- Polyamides rope thimble

Note

On balancers adjusted load is balanced in the adjusted working height!

Order No.	Load Capacity [kg]	Cable Travel [m]	Weight [kg]
040874-014x2.0	10 - 14	2.0	5.5
040874-018x2.0	14 - 18		6.0
040874-022x2.0	18 - 22		6.5
040874-025x2.0	22 - 25		6.5

Balancer without Blocking Device (040873) Load Capacity 10 to 105 kg



Technical details

- Sturdy aluminum case
- Rope: stainless steel wire, \varnothing 4 mm
- Rope guide: low friction
- Conical reel body with ball bearing
- Fine adjustment in the lifting area with continuous load adjustment
- Suspension: Rotating safety hook
- Blocking device (to fix or release the load at the requested height)
- Auxiliary safety suspension
- Fail safe spring mechanism
- Polyamides rope thimble
- Option: Release chain (see page 27)

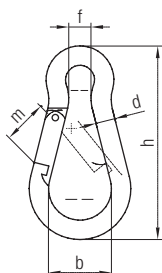
Note

On balancers adjusted load is balanced in the adjusted working height!

Order No.	Load Capacity [kg]	Cable Travel [m]	a [mm]	Weight [kg]
040873-015x2.0	10 - 15	2.0	220	8,9
040873-020x2.0	15 - 20			9,5
040873-025x2.0	20 - 25			9,5
040873-030x2.0	25 - 30			9,9
040873-035x2.0	30 - 35			10,3
040873-045x2.0	35 - 45			10,6
040873-055x2.0	45 - 55			11,2
040873-065x2.0	55 - 65			12,0
040873-075x2.0	65 - 75	2.0	256	12,8
040873-090x2.0	75 - 90			15,8
040873-105x2.0	90 - 105			16,9

Accessories for Balancer

Spring safety hook



Technical details

- The snap hook is for the fixation of balancers and their load
- Material: galvanised steel

Order No.	d [mm]	h [mm]	f [mm]	b [mm]	m [mm]	Load Capacity [kg]	Weight [kg]
040010-40x4	4	40	4	12	8	100	0.1
040010-53x6	6	60	5	16	8	120	
040010-90x9	9	60	9	25	10	250	

Safety Chain



Order No. 040499

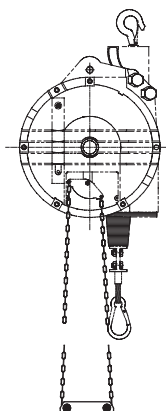
Technical details

- Length: 200 mm
- Load capacity: 100 kg
- Weight: 0.3 kg
- Material: galvanised steel

Note

The safety chain serves as protection against falling down.

Release Chain (040830-5)



Order No. 040830-5

Technical details

- Length: 800 mm
- Weight: 0.2 kg
- Release chain: galvanised steel
- Handle: plastic
- Application for balancer 040873

Note

The release chain is mounted to the blocking device of the balancer. This device serves to lock and release the load at the required height.

Application Directives

Information

Balancer

Required for the selection of a balancer:

- Choose the size of the balancer with regard to the total weight to be suspended (tool plus accessories) and to the requested hoist.
- Try to use the upper zone of the balancer's load capacity data if possible.

Installation of the balancer:

- For safety reasons always use a 2nd load stop device, to prevent the load from falling down.
- The balancer has been arranged for vertical operation. A non-vertical hoist will produce permanent abrasion. We therefore recommend to use cable trolleys running within a track system, to guarantee a vertical pull.
- If several balances are operated very close to each other, suspend them at different heights to prevent collisions.
- Please also consider the operating instructions.

Warning

- It is not allowed to lift and transport people with the products listed in the catalogue.
- Check the prescribed requirements and laws.
- Make sure that the equipment and load carrying devices, on which the hoist units will be suspended, are sufficiently dimensioned and provide the necessary stability for the hoist inclusively hanging charge.
- Read all operating instructions and warnings carefully.
- Do not overload the hoist unit.
- Standing under the pending load is forbidden.
- Attention when adjusting the balancer.

Information

We reserve the right to carry out modifications to the product in the course of technical development at time without prior notice.

All our equipment is in accordance with CE. Our spring balancers are produced in accordance with the DIN 15112 guideline, which states, among other things, that spring balancers with a load capacity of 3 kg or more must have a device for blocking the rope drum in the event of spring breakage.

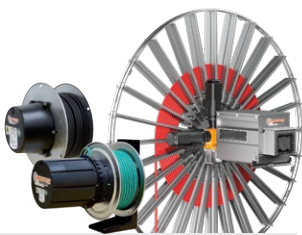
Our after sales service includes an expert repair team to refit material if required. If repair is not possible we will offer you a suitable replacement.

Please note our general terms of business. We will send them to you on request.

Reprint, even in parts, is only permitted with our approval.

Your Applications – our Solutions

The solutions we deliver for your applications are based on your specific requirements. In many cases, a combination of several different Conductix-Wampfler systems can prove advantageous. You can count on Conductix-Wampfler for hands-on engineering support together with the optimum solution to safely meet your needs.



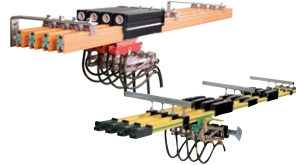
Cable and Hose Reels

Motor driven and spring driven reels by Conductix-Wampfler provide energy, data and media over a variety of distances, in all directions, fast and safe.



Festoon Systems

Conductix-Wampfler cable trolleys can be used in virtually every industrial application. They are reliable, robust and available in an enormous variety of dimensions and designs.



Conductor Rails

Available as enclosed or multiple unipole systems, Conductix-Wampfler conductor rails reliably move people and material.



Inductive Power Transfer IPT®

The no-contact system for transferring energy and data. For all tasks that depend on high speeds and absolute resistance to wear. Flexible installation when used with Automated Guided Vehicles.



Non-insulated Conductor Rails

Robust, non-insulated aluminum conductor rails with stainless steel cap provide the ideal basis for power supply of people movers and transit networks.



Radio Remote Controls

Safety remote control solutions customized to meet our customer needs with modern ergonomic design.



Reels, Retractors and Balancers

Available for hoses and cables, as classical reels or high-precision positioning aids for tools, we offer a complete range of reels and spring balancers.



Jib Booms

Complete with tool transporters, reels or an entire media supply system – safety and flexibility are key to the completion of difficult tasks.



Slip Ring Assemblies

Whenever things are really "moving in circles", the proven slip ring assemblies by Conductix-Wampfler ensure the flawless transfer of energy and data. Here, everything revolves around flexibility and reliability!



Mobile Control Systems

Mobile control solutions for your plant – whether straightforward or intricate. Control and communication systems from LJU have been tried and tested in the automotive industry for decades.



ProfiDAT

This data transfer system is a compact slotted waveguide and furthermore can be used as Grounding rail (PE) as well as positioning rail at the same time.

www.conductix.com

Conductix-Wampfler

has just one critical mission:

To provide you with energy and data transmission systems that will keep your operations up and running 24/7/365.

To contact your nearest sales office, please refer to:

www.conductix.contact

