

For the electric installation of motorized cable trolleys

MV0380-0015b-EN

Order-Number

For all Motorized Cable Trolley with motor drive controled with frequency inverter

General

Attention! The connection and the maintenance of an electric drive may only be carried out by qualified electrical personnel that are familiar with the relevant regulations. It is also required to observe the appropriate security regulations.

For all questions with regard to the motor or the frequency inverter it is very important to consult the appropriate operating instructions.

The motorized cable trolleys (MCT) are made up of two basic electric components, first the actual cable trolley with the three-phase motor and second the control unit with the frequency inverter. Each motorized cable trolley is supplied with its own frequency inverter with an appropriate braking unit for all frequency inverters.

In any case the frequency inverters have to be installed in a closed switchboard. The switchboard, respectively the room where the switchboard is placed, has to be air-conditioned. The entrance and escape of the cooling air above and below the inverter has to be guaranteed, respectively the cooling body temperature must not exceed the specified value of 40°C.

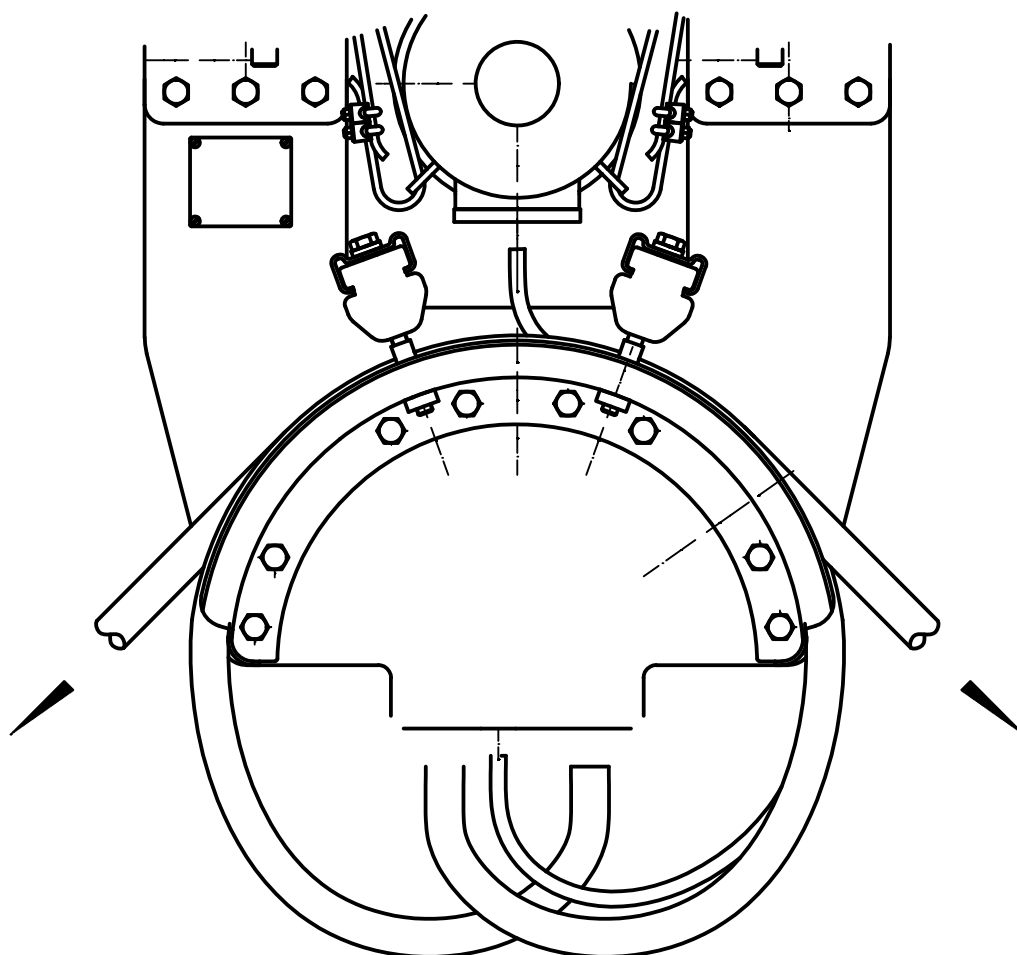
The power supply to the three-phase motors and limit switches of the motorized cable trolleys is realized in such a way that the rubber round cable accompanying the festoon system is lead through the terminal boxes that are installed at the center plate. See the following illustration on this page.

For this purpose the cable is cut off at the appropriate position and clamped to the appropriate terminal clamp with the aid of the number code of the individual cores.

The outlet cable for the other drives is clamped on the remaining terminal clamp, so that these cores are just passed through. The remaining cores, for which there are not any more terminal clamps are not connected either.

For the electric installation of motorized cable trolleys

MV0380-0015b-EN



The yellow-green protective conductor core has to be connected to the identified protective conductor clamp in the terminal box, to guarantee a safe grounding.

The continuation of the power supply from the terminal box to the terminal box of the motor respectively limit switches is already premounted ex works.

You have to make sure that the incoming as well as the outgoing supply cables are guided below both clamping bars, to avoid any tension load on the cable gland (see illustration).

For the electric installation of motorized cable trolleys

MV0380-0015b-EN

Conductix-Wampfler GmbH
Rheinstraße 27 + 33
79576 Weil am Rhein - Märkt
Germany

Phone: +49 (0) 7621 662-0
Fax: +49 (0) 7621 662-144
info.de@conductix.com
www.conductix.com

**UK
CA**

Importer for the United Kingdom:
Conductix-Wampfler Ltd.
1, Michigan Avenue
Salford
M50 2GY
United Kingdom

Phone: +44 161 8480161
Fax: +44 161 8737017
info.uk@conductix.com
www.conductix.com