

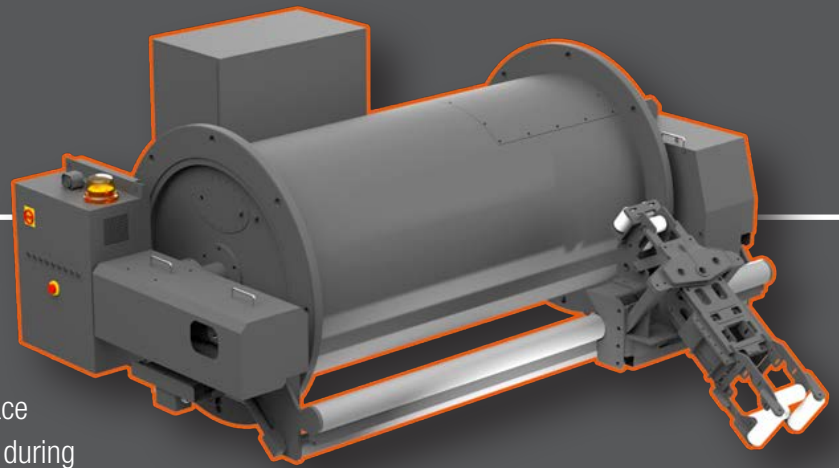


# Trailing Cable Reels

Safe and automated cable management  
for your surface equipment



# Trailing cable reel



The trailing cable reel is fitted to electric surface mining equipment to handle the trailing cable during in-pit movements.

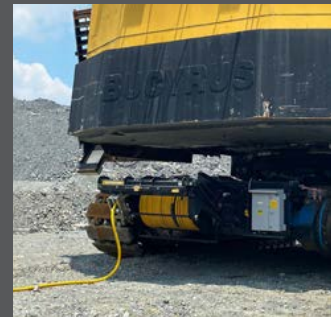
Using a trailing cable reel drastically reduces the need for manual handling, making operations much safer. It improves productivity by avoiding time-consuming manual handling.

The trailing cable is always stored on the reel, there are no more loops of cable on the ground, thus reducing the risk of damage. The cable is reeled in as the machine moves, there is no more dragging or excessive friction when handling the cable. The cable's lifetime is extended and downtime due to cable damage is reduced.

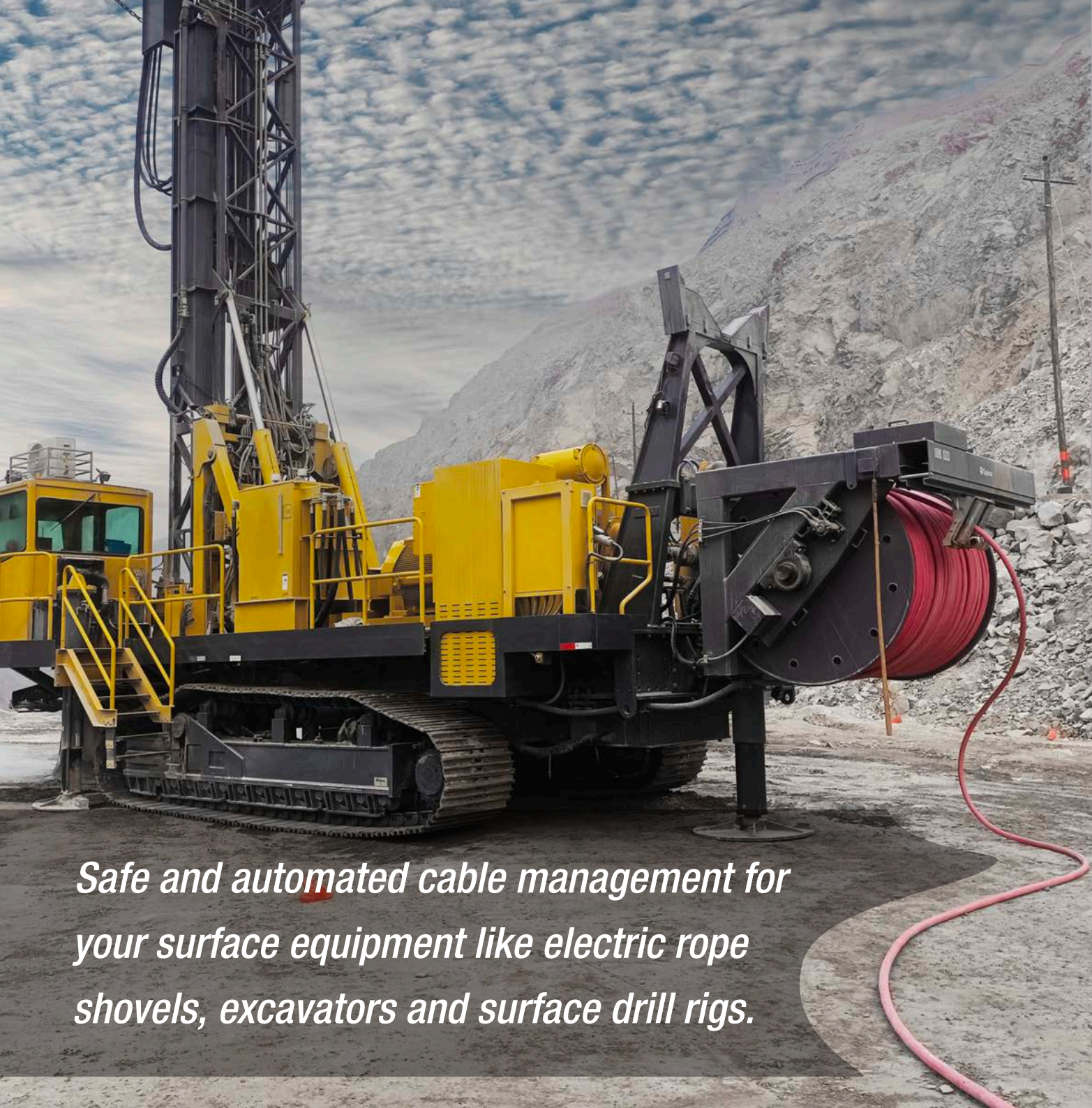
The medium voltage cable connection to the machine is ensured by a slipring (electric rotary joint) which is safely contained in the drum body

The cable reel comes with its own control box and has sensors to detect abnormal situations like excessive tension or angle, travel end. All signals are brought to the cabin and displayed to the operator

The trailing cable reel can be adapted to a machine from any manufacturer. It is available for new-built machines (OEM) or as retrofit package. The retrofit package includes mechanical and electrical interfaces like brackets to fit the cable reel on the machine frame, junction box for cable, control box, etc.







*Safe and automated cable management for your surface equipment like electric rope shovels, excavators and surface drill rigs.*





## Automated operation

As soon as the machine moves, the cable reel detects a change in cable tension and automatically rewinds or releases cable, no inputs are needed from the cabin.

## Maximise cable life

Reduces wear from dragging on ground. Reduces risk of damage by machine track.

## Safety

No operator on the ground to handle the trailing cable – eliminates the risk of reversing onto the cable.





## Specification

**Capacity:** 300 m of cable

**Voltage:** up to 15 kV

**Current:** up to 500 A

- Compact and low-profile design to fit between machine tracks
- Spooling device ensures perfect cable laying on the drum
- Robust design to withstand mine environment
- Electric or hydraulic drive

## Productivity

The cable reel gives the machine the freedom to move autonomously during work. No need to bring a team and move the cable by hand. The relocation process is made a lot simpler and quicker. The machine can power itself during longer travels.



# www.conductix.com

**Conductix-Wampfler** has just one critical mission:

To provide you with energy and data transmission systems that will keep your operations up and running 24/7/365.

To contact your nearest sales office, please refer to:

**www.conductix.contact**

