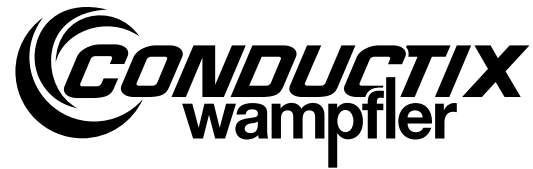


# Assembly instructions

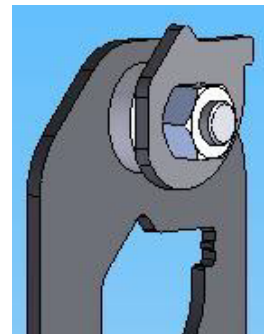
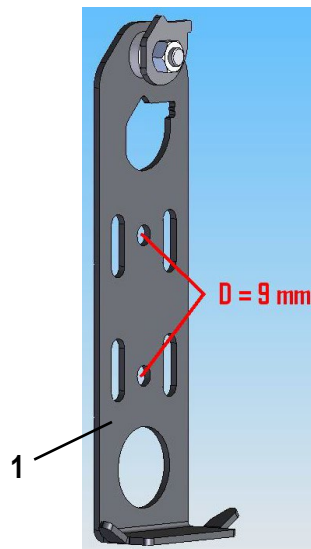


## Conductor rail program 0832

### System hangers on various rack consoles



First read the operating instructions BAL0832-0001-E with the included system description.  
It is enclosed in the basic module.



#### General references

The Conductix-Wampfler 0832 system hangers [1] are intended for attaching to the structural rack consoles. Depending on the rack consoles (e.g. IPB 100 according to DIN 1025), separate adapters may be required. The respective assembly instructions are included in the packaging of the respective adapter.

If the system must be attached on points, on which no rack consoles are available, mounting with separate Conductix-Wampfler consoles is possible (order No.: 083246-73, compare the separate assembly instructions).

#### Assembly

The system hangers must be attached so that they are secured against becoming loose due to vibrations and stress that develops within the operation. The two holes ( $\varnothing 9$  mm) are provided as screw attachment.

The system hangers must be aligned prior to the assembly of the support profile. The alignment is measured on the track of the storage/retrieval system. The required alignment quality depends on the tolerance of the storage/retrieval system.

A side positioning accuracy (Y axis  $\pm 0.5$  mm / Z axis  $\pm 2$  mm) may be assumed for rail-related storage/retrieval systems, the accuracy must be determined for other vehicles. The deviations after the alignment of the conductor rail should generally not exceed  $\pm 10$  mm in each direction as opposed to the track of the storage/retrieval system. Recommended are values below  $\pm 5$  mm. Tighter tolerances may be required on specific function points.

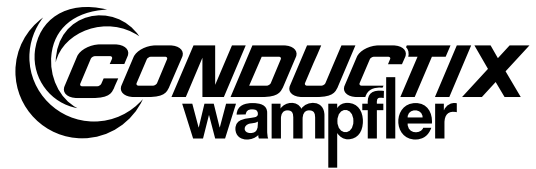
**Comment:** All illustrations are intended as aids. They may not show the current status of a component or assembly!



#### Note:

Conductix-Wampfler will not assume any liability and warranty for operation breakdowns and damages as a result of non-compliance with these assembly instructions!

## Assembly instructions



### Conductor rail program 0832

System hangers on various rack consoles

---

**Conductix-Wampfler GmbH**  
Rheinstraße 27 + 33  
79576 Weil am Rhein - Märkt  
Germany

Phone: +49 (0) 7621 662-0  
Fax: +49 (0) 7621 662-144  
[info.de@conductix.com](mailto:info.de@conductix.com)  
[www.conductix.com](http://www.conductix.com)



Importer for the United Kingdom:  
**Conductix-Wampfler Ltd.**  
1, Michigan Avenue  
Salford  
M50 2GY  
United Kingdom

Phone: +44 161 8480161  
Fax: +44 161 8737017  
[info.uk@conductix.com](mailto:info.uk@conductix.com)  
[www.conductix.com](http://www.conductix.com)